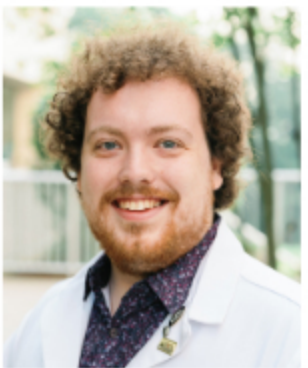


Family Medicine & Internal Medicine Interns 2025-2026



THOMAS CASE
Family Medicine



EMILY FOIT
Family Medicine



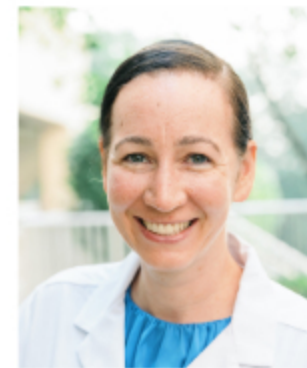
GABRIEL FOIT
Family Medicine



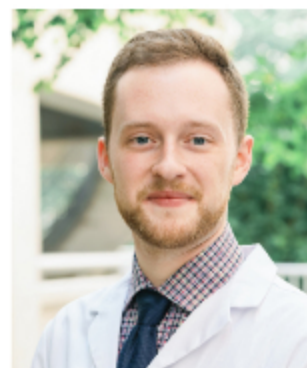
SHAYLA MOORE
Family Medicine



PATRICIA "TRICIA" SIZEMORE
Family Medicine



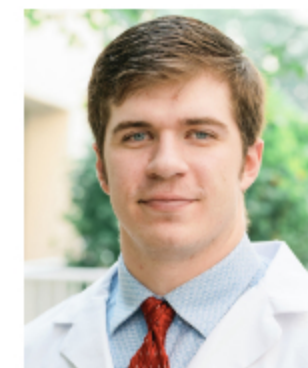
ELIZABETH SLAYTON
Family Medicine



JOHNNY "JP" BYRD
INTERNAL MEDICINE



MAYCI FULLMER
INTERNAL MEDICINE



RAY HAYS
INTERNAL MEDICINE



PHILLIP KUMPF
INTERNAL MEDICINE



PEYTON "GRACE" MORRIS
INTERNAL MEDICINE



TYCE RIDDLE
Internal Medicine



KENDALL YOUNT
Internal Medicine